



Energy Learning Network
Rhwydwaith Addysg Ynni



Community
Energy
England

We're the national voice for
community energy



Community Energy England (CEE)



Community Energy England (CEE) is the national network and representative body for community energy.

- A voice for the sector
- We provide opportunities and mechanisms for active community energy practitioners in all parts of England to connect, learn, share business models and help each other overcome obstacles

330+ members

- Community energy organisations, sector stakeholders and other supportive organisations



What is Community Energy?



Social enterprise, mutuals and cooperative business models.

Invest in local renewable energy.

Reward Local Savers and Impact investors

Use surplus to fund other social impact work

Democratic, not for profit, place based.

Putting people at the heart of the Clean Power transition.

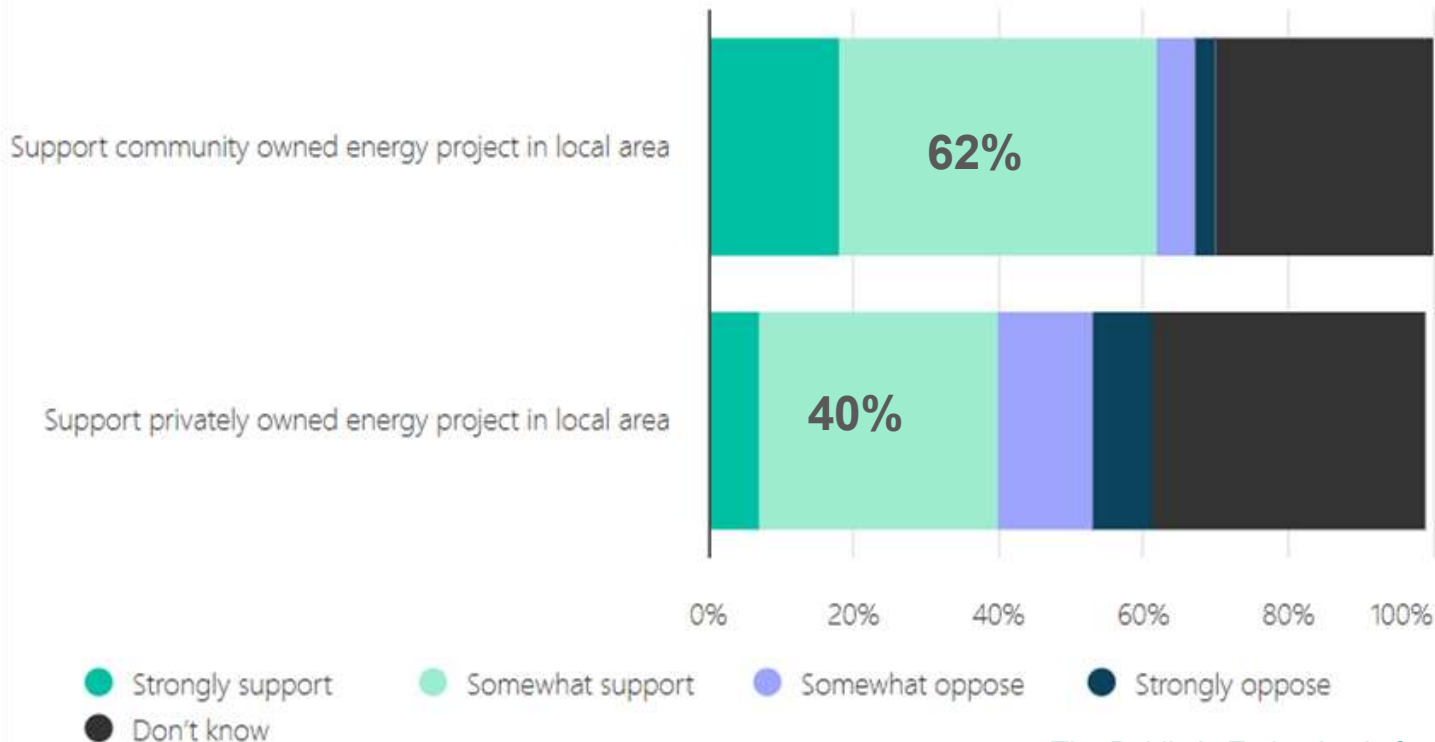
Schools, hospitals, let people know and be involved!



It's the space between domestic energy and commercial energy.

Electrification + Democracy = Community Energy

People LOVE community energy!



[The Public is Enthusiastic for Community Energy](#)

A brief history of Community Energy....

1997 – Baywind Community Energy



2003 -



BRO DYFI
COMMUNITY RENEWABLES

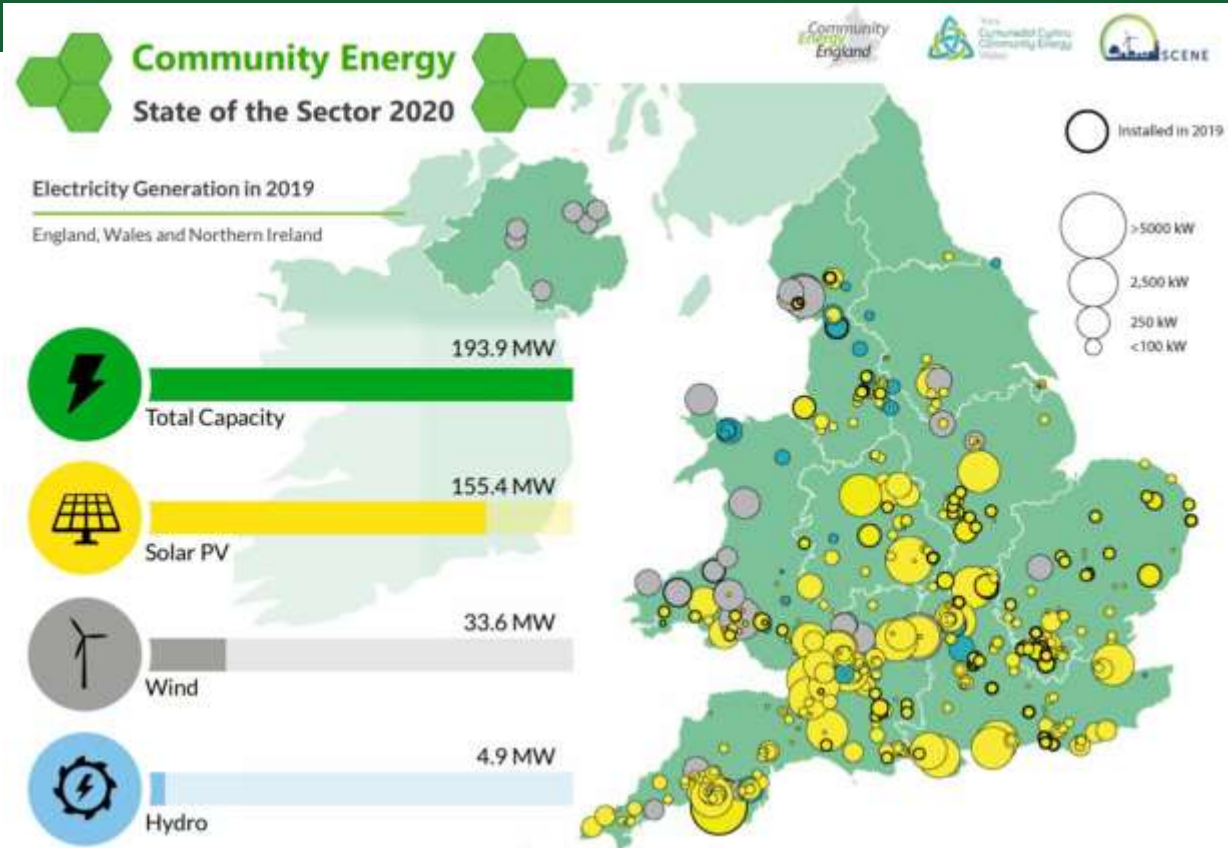


2010 – Green Energy Nayland

The UK's first community owned rooftop Solar PV!



The State of the Sector



Includes 324 schools & NHS Trusts

Largest 40MW solar

Support from umbrella groups



Welcome to Community Energy England's National Map. Please click here to read this short note to get the most out of this

158,459 views

Published on 16 September 2025

SHARE

EDIT

1_Community Energy Projects

- Solar PV
- Solar
- Retrofit
- EV charger
- Wind
- Hydro
- Generation, multiple tech
- Low Carbon Transport
- Heat
- Storage
- Energy Efficiency / Retrofit
- Heat (Pumps)



The State of the Sector

Community energy in the UK 2023



Sponsored by

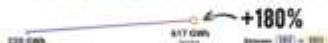
RENEWABLE ENERGY GENERATION

TOTAL RENEWABLE ELECTRICITY CAPACITY*

398 MW capacity

TOTAL RENEWABLE ELECTRICITY GENERATION

617 GWh produced in 2023
 Equivalent to powering **228,530** domestic households



TOTAL TONNES OF CARBON EMISSIONS SAVED

165,980 tCO₂ saved in 2023
 equivalent emissions to 209,570 passenger round trips from London to New York*



FINANCE & INVESTMENT

TOTAL ORGANISATIONAL TURNOVER

£43.2 million turnover

TOTAL INVESTMENT SECURED

£24 million investment secured since 2021
£225 million investment secured since 1997

EMPLOYEES & VOLUNTEERS

TOTAL NUMBER OF JOBS IN THE SECTOR

796 currently employed
102 new jobs created since 2021

TOTAL NUMBER OF VOLUNTEERS IN THE SECTOR

3,719 volunteers
102 new jobs created since 2021

LOCAL ECONOMY

FINANCIAL CONTRIBUTION TO LOCAL ECONOMY

£12.9 million contributed to local economies from organisational expenditure and community benefit funds

INVESTMENT RAISED FROM LOCAL COMMUNITIES

£6.4 million investment raised from communities since 2021

ORGANISATIONS

COMMUNITY ENERGY ORGANISATIONS IN THE SECTOR

583 organisations
111 new organisations since 2021

123 organisations providing energy advice
111 organisations providing free carbon transport
319 organisations providing energy efficiency advice

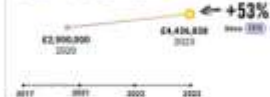
TOTAL MEMBERS OF COMMUNITY ENERGY ORGANISATIONS

69,500 members
132% increase since 2017

ENERGY EFFICIENCY & FUEL POVERTY

BILL SAVINGS FROM ENERGY EFFICIENCY & ADVICE

£4.4 million bill savings since 2021



£13.8 million saved since 2021

PIPELINE

CONTINUED SECTOR DIVERSIFICATION IN 2024

72 new energy advice and energy efficiency services

FORECAST FINANCES IN 2024

£157 million planned investment to be secured for renewable energy

STALLED RENEWABLE ENERGY

79 stalled projects with **270 MW** capacity that communities want to deliver



The Local Power Plan!



Department for
Energy Security
& Net Zero

Great British
ENERGY

Local Power Plan

February 2026



Great British Energy to
cut bills and create wealth
for communities through
Local Power Plan



Biggest investment in
community energy
in British history



The Local Power Plan

Our vision is:

By 2030, every community in the UK will have the opportunity to own a local energy project.

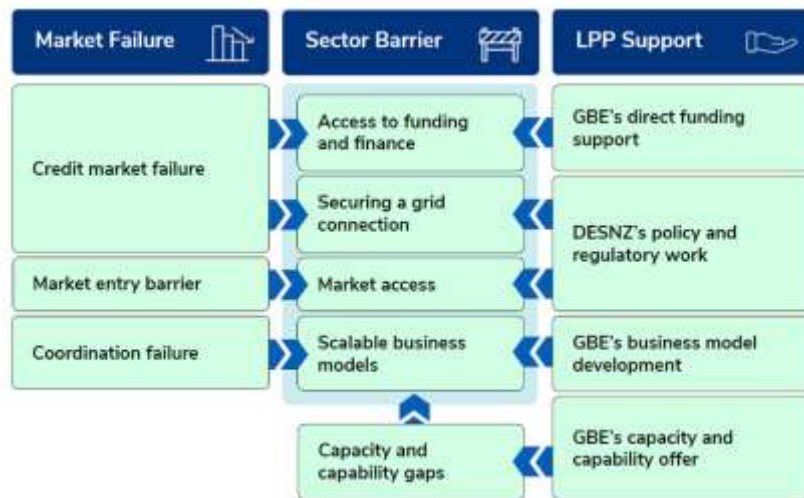
4 areas of Support:

1. Direct Funding
2. Capacity and Capability
3. Innovation and Business Models
4. Policy and Regulatory Changes

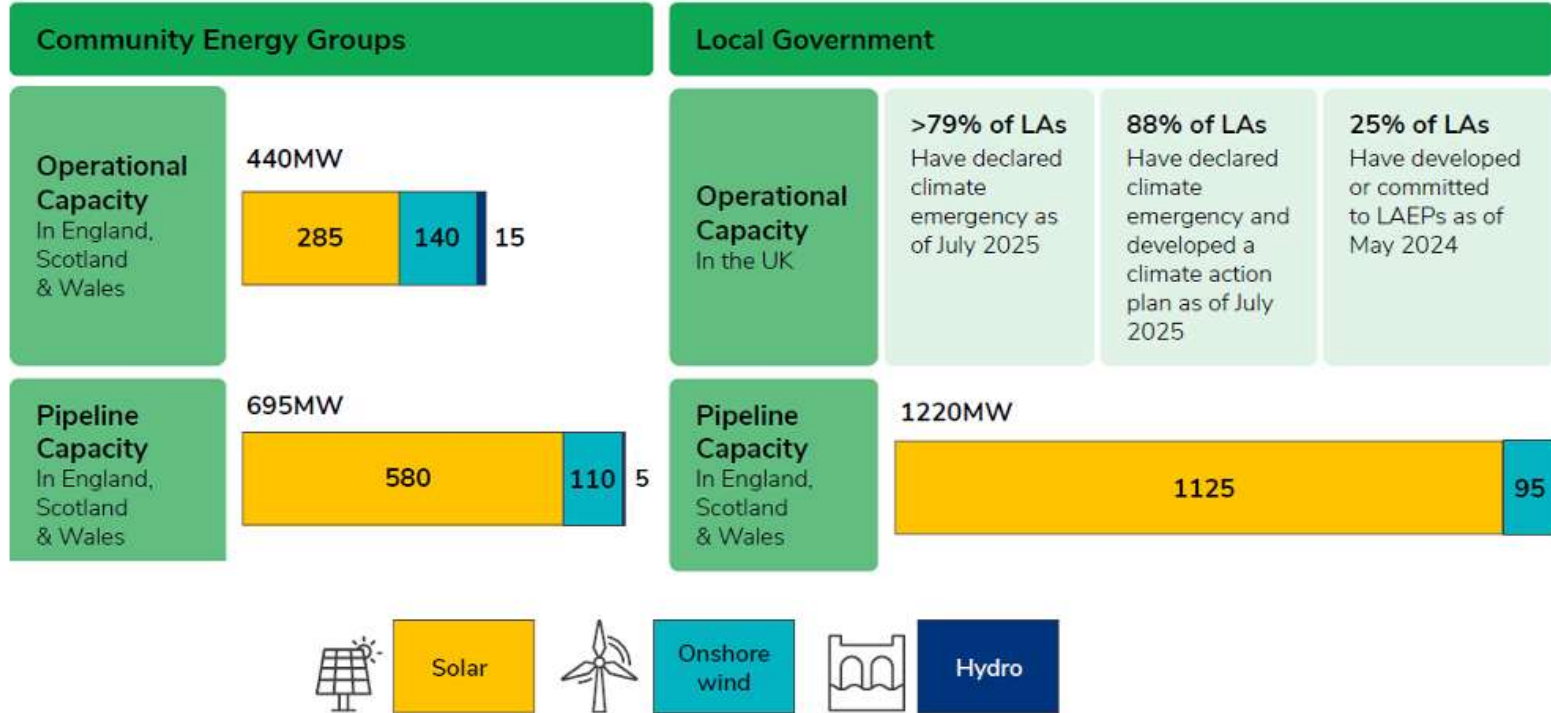
Up to £1 Billion budget through to 2030

Focus on electricity generation:

Wind, Solar, Hydro, Batteries, Flexibility



Local Power - collaboration between LAs & CEGs



Local ownership as a foundation for Community Wealth Building

1. Funding

GBE Capital Toolkit

Emergence and development grants

Great projects start with strong foundations. That's why GBE is exploring two **grant funds** to support early-stage project development:

- **The Great British Energy Community Fund** for community energy groups.
- The **Partnership Fund**, backing joint local government and community energy group projects.

These funds are designed to increase project viability and give these groups the confidence to take the first step toward building a greater pipeline of clean investable projects.

Construction and operation loans

We know the challenges don't stop when a project reaches construction and getting loans for a range of community energy projects can be a barrier. That's why GBE is exploring new loan schemes to help projects move onto the next stage:

- **Construction** - giving projects the backing they need to get built and start generating clean power.
- **Shared Ownership** - enabling communities to buy a stake in larger renewable projects in their area, so the benefits stay local.

These loans will work alongside private investment and community share offers.

Local Investment Funding

GBE will launch a **Local Investment Fund** – searching on a project-by-project basis to identify viable investment opportunities and provide direct investment into local projects.

2. Capability

A strong partner network

GBE Local will develop strong relationships with a range of partners - both regionally and nationally - to tackle barriers to growth. This network will include:

- **Strategic partners**
Organisations GBE works with to develop new delivery models such as Ofgem, Distribution Network Operators (DNOs) and NESO.
- **Project partners**
Organisations GBE develops a commercial arrangement with to help support the development and delivery of projects.
- **Local Power Plan partners**
Organisations GBE works with to ensure the success of the Local Power Plan, including community energy groups and local authorities. GBE Local will work with these partners to develop a pipeline of projects in the construction and operation stages which we can support.

In house expertise & regional support

External partners

Templates and Guidance
“Community Energy in a Box”
Shared Ownership guidance

3. Revenue

Community Energy Revenue Models

Sell to Market

Community generators sell their electricity to the market via an off-taker, such as a local business, an energy supplier or a national price mechanism.

Long-term Power Purchase Agreement (PPA)

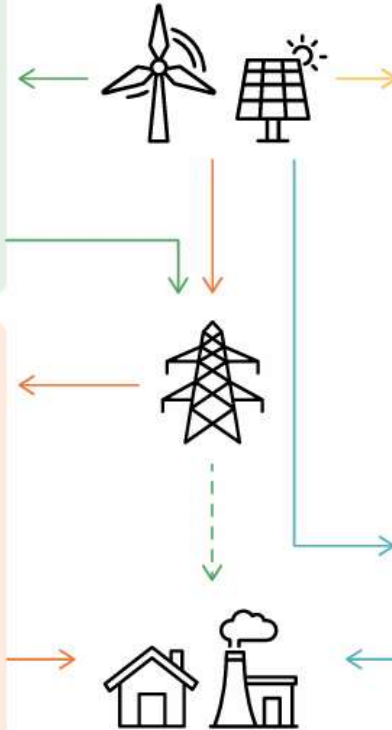
Generators sell their energy to an end user of energy or an energy supplier, over a longer-term contract. PPA arrangements and models vary.

Local energy supply models

Generators sell their electricity to local households, businesses, industry, commercial or public-sector off-takers via a licenced energy supplier or through an exemption.

Private wire

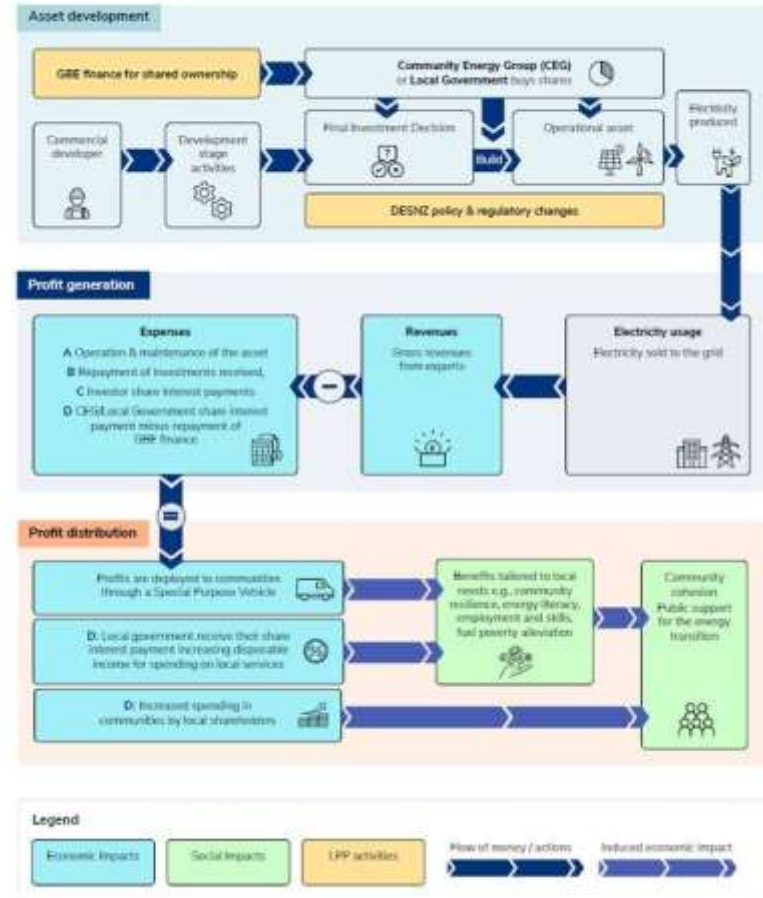
Generators sell their electricity to a consumer via a direct physical link not connected to the licensed network.



4. Policy

- Shared Ownership
- SLES, Smart Local Energy Systems
- Exempt Supply
- Community Batteries
- Planning
- Grid Connections

Figure 5. Economic and social impacts of the Local Power Plan to enable shared ownership of commercial renewable energy generation projects




Why community wind?

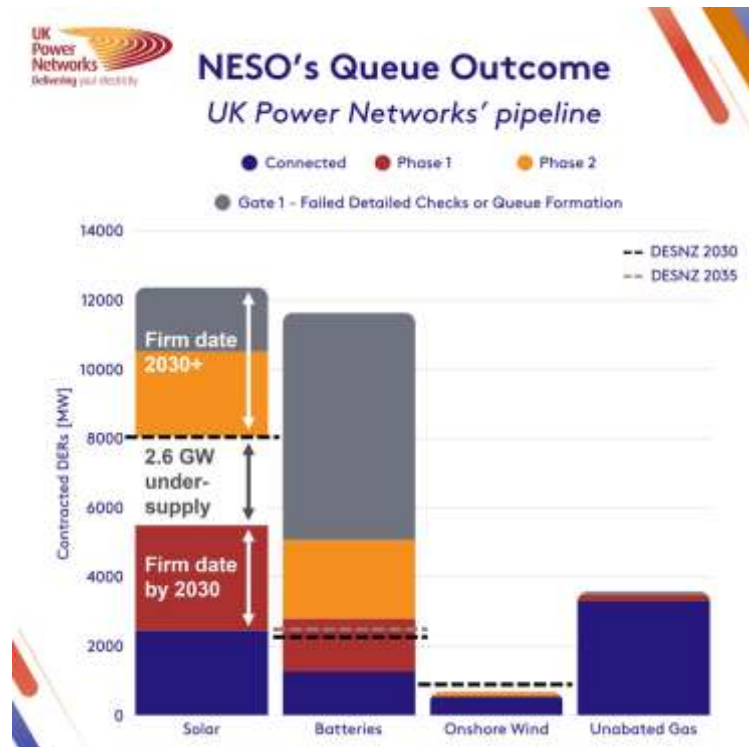
It's the missing piece of the Clean Power plan!

5.1GW capacity available still.

200MW in the UK Power Networks region

Table 22: Phase 2 MW permitted capacity remaining for onshore wind in England and Wales, and Scotland, for future Gated Application Windows

Technology	England and Wales	Scotland	Grand Total
 Onshore Wind	5100.7	0.0	5100.7



New! Wind Working Group



- The purpose of the working group (webpage link [here](#))
- First meeting: 11th March 11:00-12:00
- Any CEE member can join
- Complete the [Google Form](#) by 9th March to join (we will email this out)



It's time to Up the Energy!



Email: j.taylor@communityenergyengland.org

www.communityenergyengland.org